

PACIFIC PILOTAGE AUTHORITY

1000 – 1130 West Pender Street
Vancouver, B.C
V6E 4A4



NOTICE TO INDUSTRY

Date Issued: 01 March 2022

Notice Number: 01/2022
(Replaces Notice 02/2011)

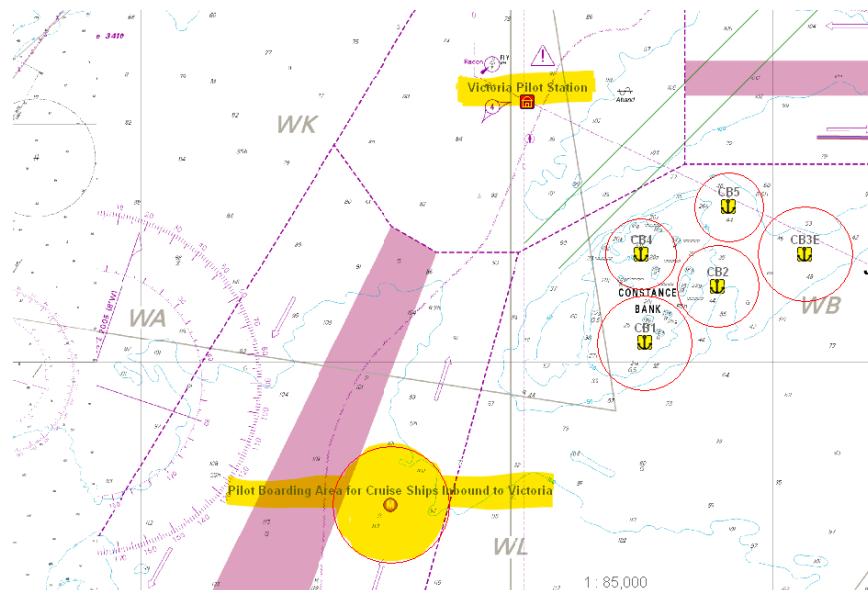
Subject: Pilot boarding requirements for cruise vessels bound to Ogden Point

Geographic Area: Pilot Boarding Station at Brotchie Ledge, Victoria, BC

Details:

To allow sufficient time for the pilots to set up their portable piloting units (PPU), and to complete the Bridge Resource Management (BRM) discussion, the following guidelines apply to cruise vessels inbound to the Ogden Point berths in Victoria, BC.

1. Pilots will board cruise vessels arriving at the Victoria pilot station no closer than three (3) miles from the 'VH' buoy. The vessels are requested to remain three (3) miles south of the 'VH' buoy if the pilot boarding is delayed. Unless the situation demands, the vessel must remain within the TSS when approaching the pilot station.
2. After the pilot has boarded, the cruise vessel is to reduce speed to six (6) knots allowing time for the pilot to discuss BRM, set up the PPU, and take over the navigation conduct of the vessel.



Please contact the PPA at marineops@ppa.gc.ca should you require further information.

Brian Young
Director, Pilotage & Industry Liaison